

SINCE 1980

02 9810 6066

CHIPPENDALE RESTORATIONS

26 Parsons St Rozelle

NSW 2039 Australia

**I WANT TO
CONVERT TO GAS
WHAT DO I DO?**



LEADER IN RESTORATION BUILDING SUPPLIES

I want to convert
my fireplace to gas
but where do I start?



Chippendale Restorations are specialists at converting old fireplaces to gas in Victorian, Edwardian & Federation Houses.

What do you recommend as
the best fireplace for us?



If you, as the owner, gather the following information, we will be able to quickly assess which gas fireplace options are available to you.

{ Step 1: }

Take a "front on" picture of the whole fireplace. Include in the "photo frame" the CHIMNEY BREAST-corner/middle of room, SURROUND-timber/marble mantle, GRATE-tiled/arched & HEARTH-tiled/stone).



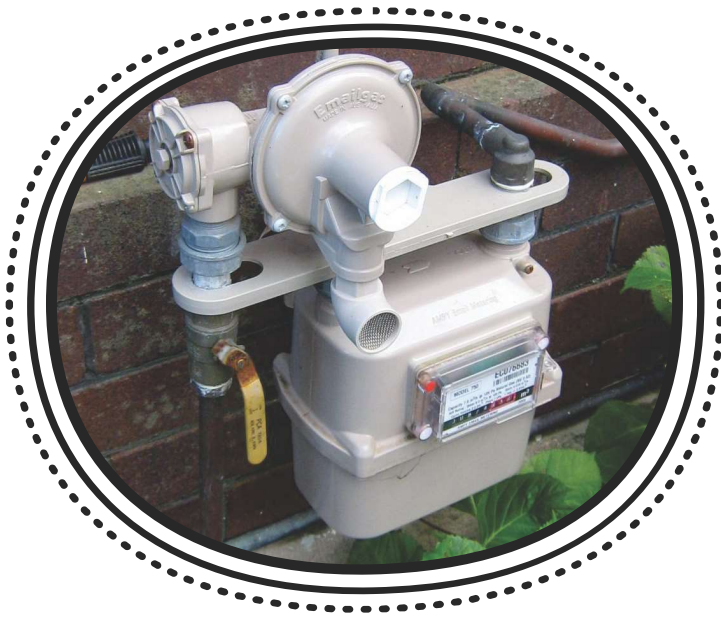
Any measurements to all of the above will be very helpful!



{ Step 2: }

Take a "45 Degree" picture of the whole fireplace (this angle will help give a sense of "depth").

If you can measure the depth of the fireplace this will be very helpful!



{ Step 3: }

Take a picture of the nearest gas outlet, appliance or pipe (to get an idea of the length of gas pipe that will be required to run to the fireplace).

{ Step 4: }

Take a picture of any wall vents that are present in the room (all open flame gas fires require permanent ventilation according to the gas regulations AS5601).

If you can measure the size of the room you are wish to heat, this will be very helpful!



{ Step 5: }



Take a picture of the chimney (all open flame gas fires require a gas approved cowl to be fitted to the chimney pot according to the gas regulations AS5601).

Please inform us if this is a single or multi-level house & chimney.



Let's light the fire!

You are now armed with all the information you need to chat to one of our friendly staff at Chippendale Restorations about converting your fireplace to gas. We look forward to providing you with the best possible gas conversion solution available!